

2019-2020

Annual Program Report

Mission Statement

“The mission of Clinch-Powell Educational Cooperative Head Start/Early Head Start is to provide high-quality comprehensive services to enhance the lives of children and families from prenatal to preschool age.”

Vision Statement

“The vision of Clinch-Powell Educational Cooperative Head Start/Early Head Start is to be recognized as the premier child development program in the four county service area, as we endeavor to establish community partnerships that promote positive and productive relationships with families, which empower them toward self-sufficiency and life-changing achievements.”

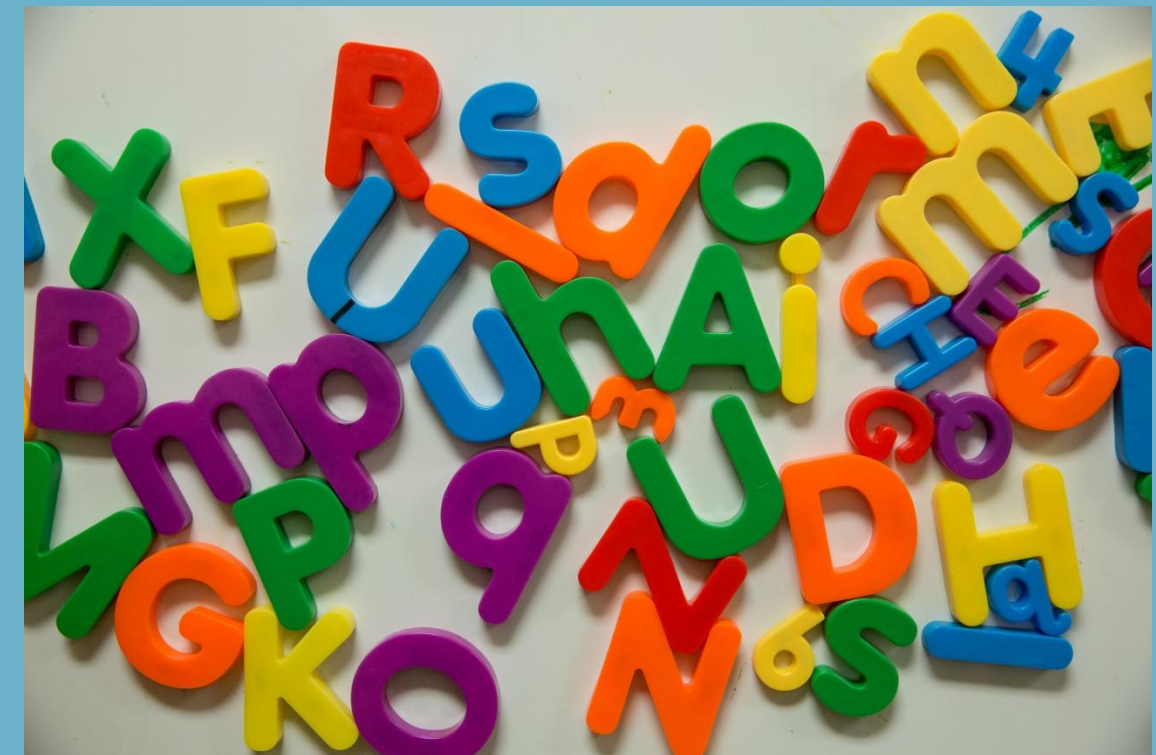
Clinch-Powell Educational Cooperative

Head Start/Early Head Start

106 Ingle Drive

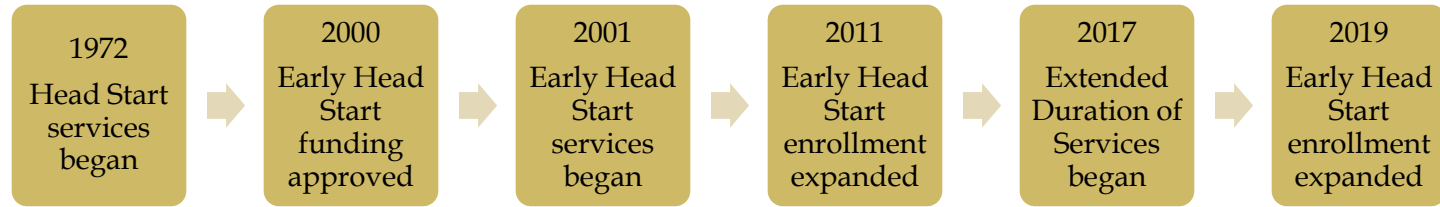
P. O. Box 279

Tazewell, TN 37879



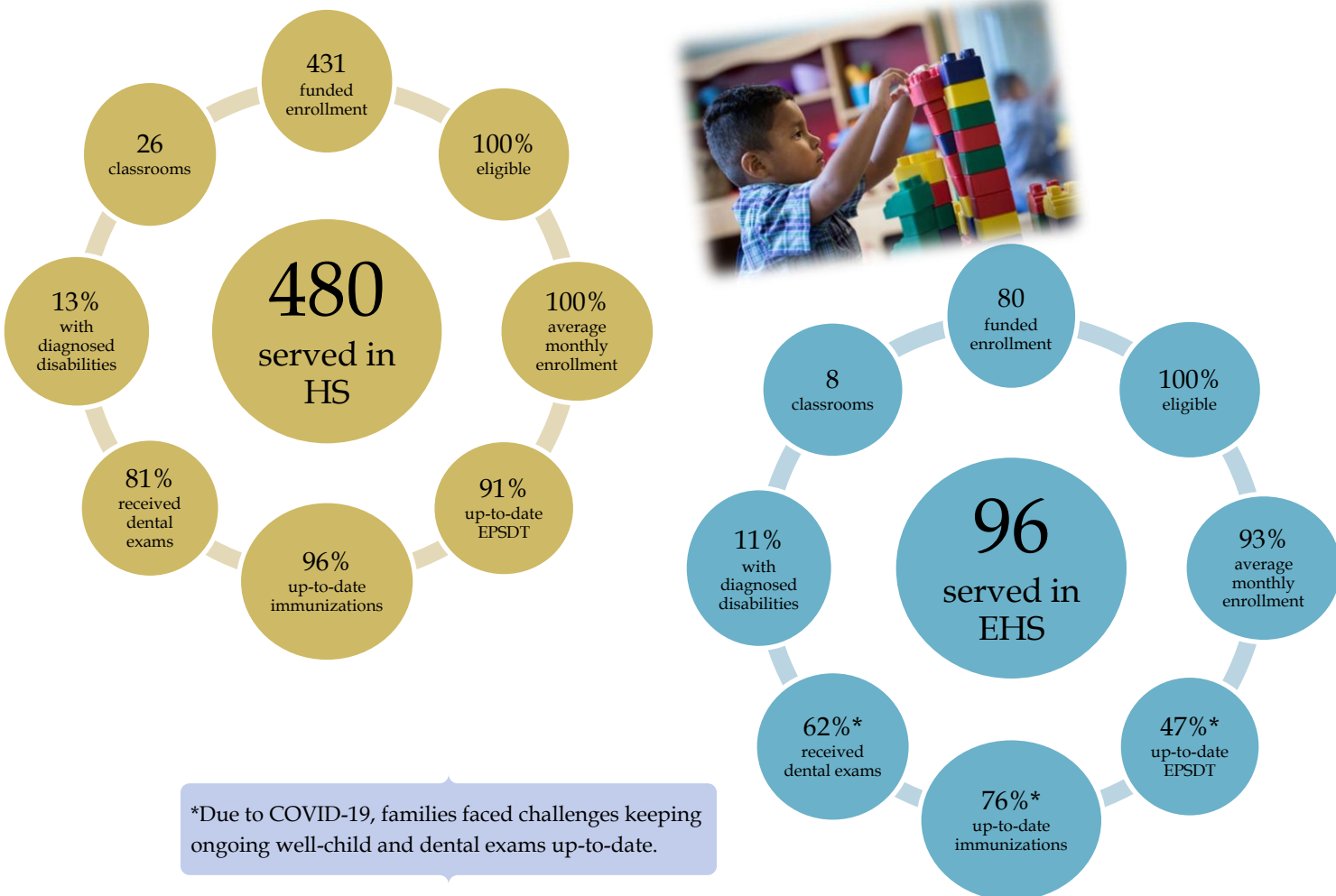
Clinch-Powell Educational Cooperative
Head Start/Early Head Start Program

CPEC HS/EHS History of Services.....



In 1972, Clinch-Powell Educational Cooperative began as a Home Start program and, along with 15 other Home Start Demonstration Projects across the country, proved that Head Start Services could be successfully implemented into a home-based setting. Since then, CPEC has experienced many expansions, to include the addition of the center-based option in 1995 and Early Head Start in 2000. Through the years, service delivery has transformed to meet the changing needs of the community. This 2019-2020 Annual Report highlights the quality services provided by the CPEC Head Start/Early Head Start Program.

Program Services Data



Center Contacts

Campbell County

Elk Valley
6693 Highway 297
Pioneer, TN 37847
(423) 784-2193

Valley View
1189 Old Middlesboro Highway
LaFollette, TN 37766
(423) 562-7090

West LaFollette
210 W. Beech Street
LaFollette, TN 37766
(423) 562-7335

Scott County

Burchfield
1108 West 3rd Avenue
Oneida, TN 37841
(423) 569-5022

Fairview
8706 Baker Highway
Huntsville, TN 37756
(423) 663-9301

Huntsville
3225 Baker Highway
Huntsville, TN 37756
(423) 663-4668

Robbins
359 School House Road
Robbins, TN 37852
(423) 627-4647

Winfield
23374 Scott Highway
Winfield, TN 37892
(423) 569-2147

Claiborne County

Child Development Center
775 Blue Top Road
New Tazewell, TN 37825
(423) 626-2517 OR (423) 626-6423

Clairfield
6366 Highway 90
Clairfield, TN 37715
(423) 784-7700

Ellen Myers
190 Nettleton Road
Harrogate, TN 37752
(423) 869-4513

Powell Valley
245 Powell Valley School Lane
Speedwell, TN 37870
(423) 869-0222

SMMS
450 Brown Street
Tazewell, TN 37879
(423) 626-1622

Springdale
1917 Highway 25E South
Tazewell, TN 37879
(423) 626-5152

TNT
497 Davis Drive
New Tazewell, TN 37825
(423) 626-5708

Hancock County

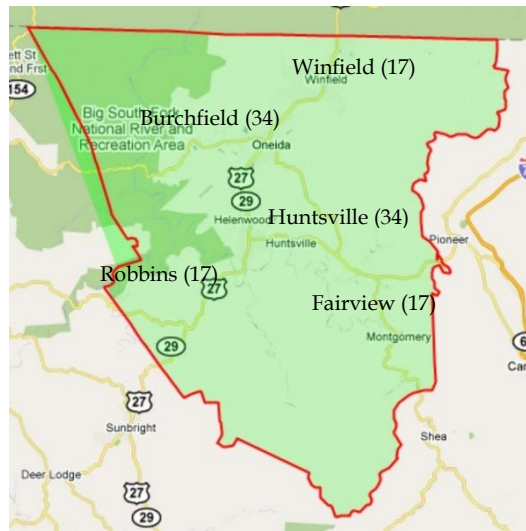
Early Head Start
398 Harrison Street
Sneedville, TN 37869
(423) 733-1500

Service Area and Enrollment

Funded Enrollment = 511



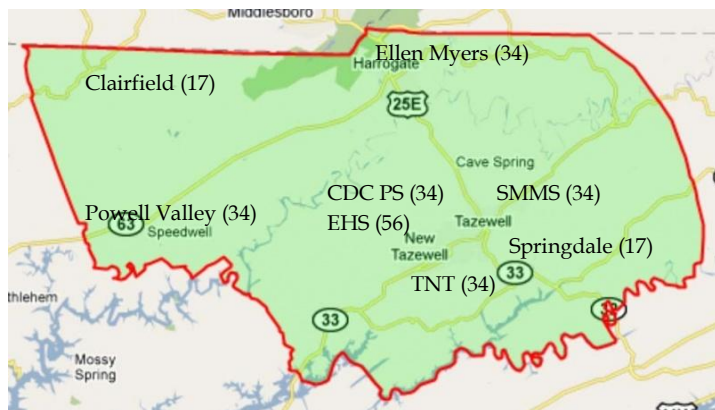
Scott County
Funded Enrollment - 119



Campbell County
Funded Enrollment - 108



Claiborne County
Funded Enrollment – 204 HS & 56 EHS

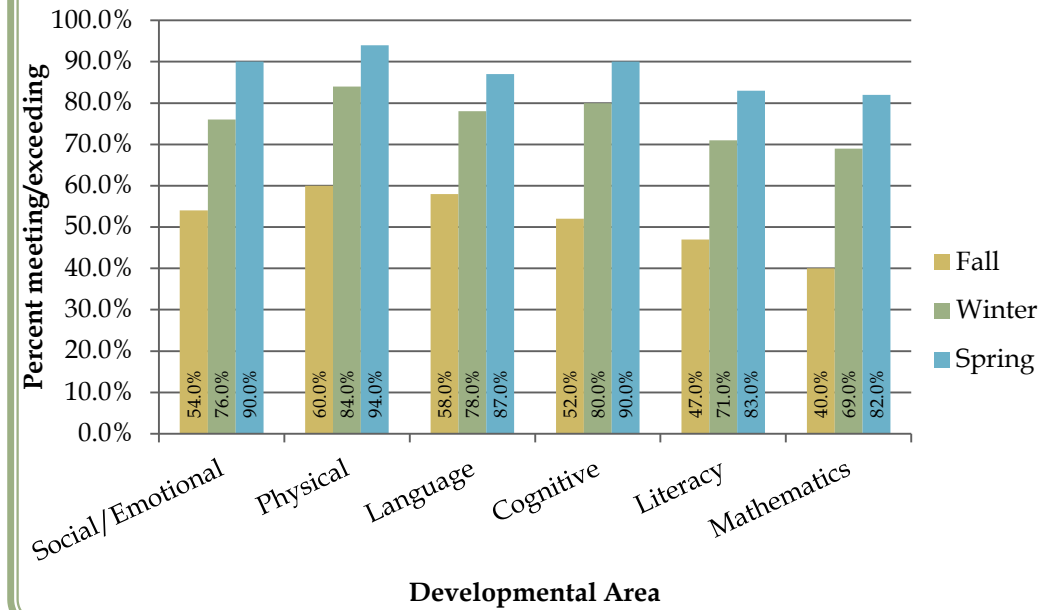


Hancock County
Funded Enrollment - 24



School Readiness

2019-2020 Educational Outcomes



Teachers assess child progress using Teaching Strategies Gold, which is paired with the Creative Curriculum, the Program's premier evidence-based curriculum. Classrooms are monitored multiple times each year to ensure the provision of quality services. Proudly, all centers hold the highest quality 3-star rating; and, the Child Development Center location, which serves both Head Start and Early Head Start families, is NAEYC accredited.

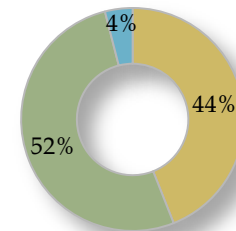
School Readiness goals align with the Head Start Early

Learning Outcomes Framework and Tennessee Early Learning Developmental Standards. These guidelines ensure that all areas of development are included and reflected in daily lesson planning.

Teacher Educational Attainment

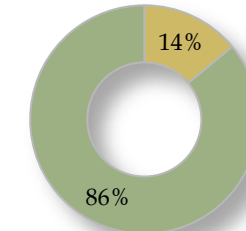
HS Teachers

BA or higher AA HS Diploma



EHS Teachers

BA or higher CDA



53% of the 124 Head Start staff are current or former HS/EHS parents

47% of the 32 Early Head Start staff are current or former HS/EHS parents

*Teacher with HS Diploma was enrolled in a BA program



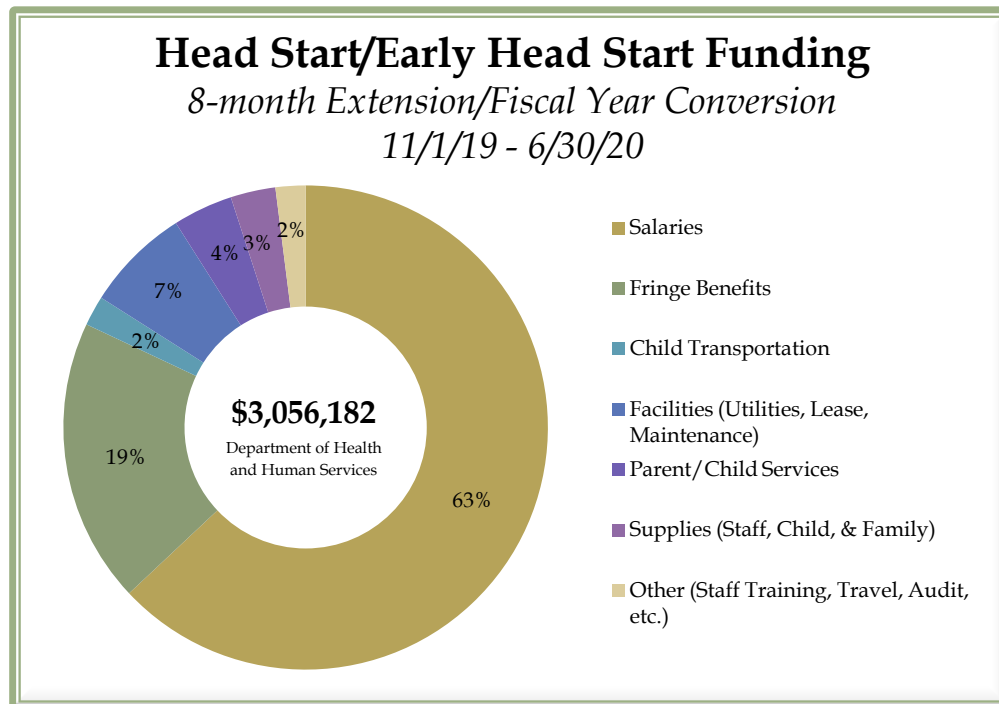
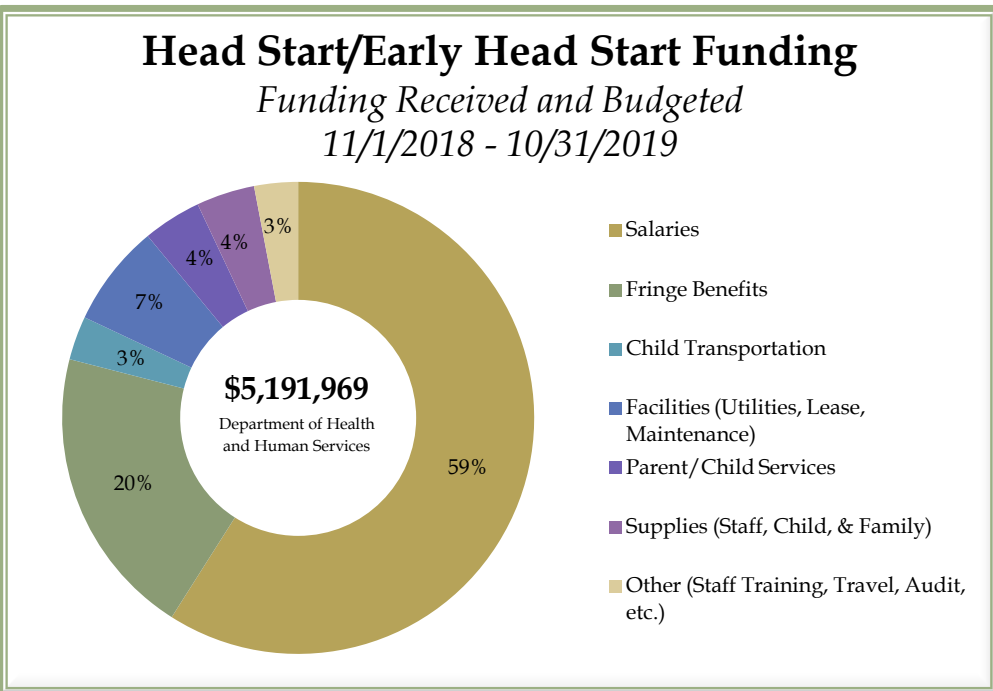
My family is the primary reason I decided to seek a degree in Early Childhood Education. I worked full-time while pursuing my degree and I am very fortunate to do what I love in a Program that values the education of both children and staff and respects the importance of family.

~ Brianna Loveday – Primary Caregiver, EHS

Accountability and Review

The Agency consistently receives fully compliant audit reports verifying sound accounting practices and internal controls, as was evidenced by the recent “no findings” audit conducted in July 2020. The Office of Head Start approved the Program’s request for a conversion of its fiscal year-end from the previous date of October 31st to a new year-end date of June 30th. This conversion extended the Program’s FY 2019 budget an additional eight months through June 30, 2020. The FY 2018-2019 budget, as well as the eight-month extension, are reflected below.

The last Office of Head Start Monitoring Review was conducted in February 2018. Both the Head Start and Early Head Start Programs were reviewed via the Focus Area Two Monitoring Instrument. The Federal review team congratulated the staff, parents, and Board members on the Agency’s practices, procedures, and successes and issued a final report with “no findings”.



Family Engagement

A total of 751 individuals supported the Program through 8,931 volunteer hours. A total of 187 fathers participated in fatherhood/male role model activities during the program year. Typical parent engagement activities include monthly parent meetings that provide parent education opportunities guided by the *Active Parenting First Five Years*® curriculum and include community speakers; specific training on mental health, adult education, and domestic violence; weekly socialization sessions for Home-based families; semi-annual parent breakfast; Kindergarten transition activities; car seat safety checks; “Spotlight the Child” events; father-figure STEAM workshops; and of course, many opportunities to volunteer in the classroom.

The Head Start Parent, Family, and Community Engagement Framework guides staff to work closely with families to establish goals that will enhance family well-being, parent-child relationships, families as lifelong learners, family engagement in transitions, family connections to peers and community, and families as advocates and leaders – all in an effort to promote children’s school readiness.

I enrolled my son, who has Autism, in Head Start in August 2020. He wasn't talking good for a 3-year-old and he started in speech and now he is talking, singing, and communicating so good! All the staff are a blessing to me and both of my boys. I am so thankful I sent him to CPEC Head Start. It's one of the best decisions I have made for my son's future.
~ Domane Rogers, Parent, West LaFollette Center

Community Assessment

A Community Assessment is conducted every 5 years, with annual updates, for the purpose of ensuring the Program is providing services to best meet the needs of the community. The most recent revision, completed December 2019, revealed the following information in support of the Agency’s continued services within the communities served.

Service area = 1,669 square miles

- Composite population = 99,927
- 97% average Caucasian population

Average Children Ages 0-4 in Poverty = 39%

- Average percent of all families in poverty = 18.8%
- Average median household income = \$33,075
- Average per capita income = \$19,903
- Average annual income (individual) for Fair Market Rent of two-bedroom apartment = \$24,760

Average unemployment rate = 4.65%

- Average of people over age 25 with at least a high school diploma = 77.3%
- Average of people over age 25 with a Bachelor's degree or higher = 10.8%

Obesity rate for children age 2 - 4 from low income families = 13.1% - 15.3%

- Average children under age 18 who reside in a food insecure area = 23.3%
- Average children under age 18 receiving SNAP = 44%
- Average <5 receiving WIC = 55.5%

Average number live births = 191

- Average teen pregnancy rate = 12.7
- Average with adequate prenatal care = 59%
- Children born with neonatal abstinence rate range = 32.81 - 78.1

Average Child Maltreatment Reports = 1,891

- Drug overdose deaths (2018) = 27
- Number children served in Foster Care = 427
- Grandparents responsible for Grandchildren range = 43.9% - 71.0%