

2017-2018

Annual Program Report

Mission Statement

“The mission of Clinch-Powell Educational Cooperative Head Start/Early Head Start is to provide high-quality comprehensive services to enhance the lives of children and families from prenatal to preschool age.”

Vision Statement

“The vision of Clinch-Powell Educational Cooperative Head Start/Early Head Start is to be recognized as the premier child development program in the four county service area, as we endeavor to establish community partnerships that promote positive and productive relationships with families, which empower them toward self-sufficiency and life-changing achievements.”

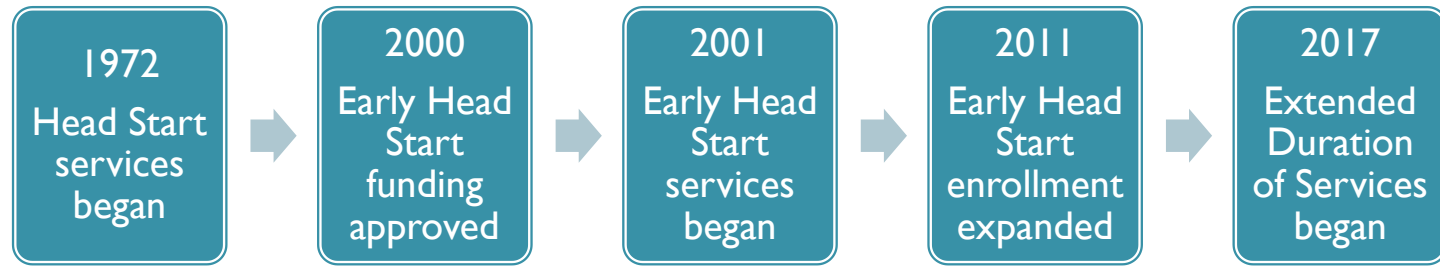
Clinch-Powell Educational Cooperative Head Start/Early Head Start

106 Ingle Drive
P. O. Box 279
Tazewell, TN 37879
(423) 626-9270



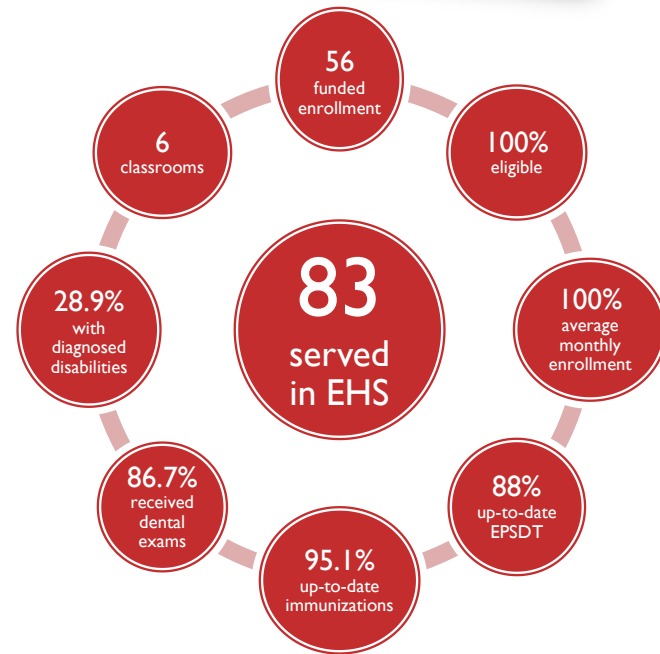
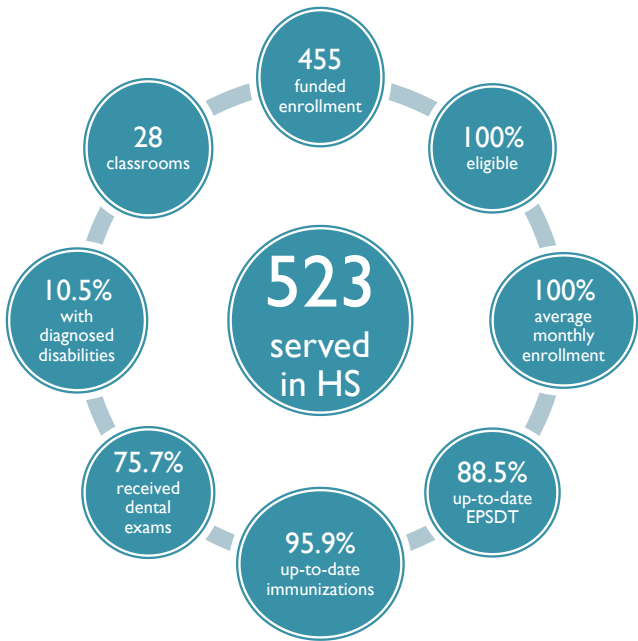
Clinch-Powell Educational Cooperative
Head Start/Early Head Start Program

CPEC HS/EHS History of Services.....



In 1972, Clinch-Powell Educational Cooperative began as a Home Start program and, along with 15 other Home Start Demonstration Projects across the country, proved that Head Start Services could be successfully implemented into a home-based setting. Since then, CPEC has experienced many expansions, to include the addition of the center-based option in 1995 and Early Head Start in 2000. Through the years, service delivery has transformed to meet the changing needs of the community. This 2017-2018 Annual Report highlights the quality services provided by the CPEC Head Start/Early Head Start Program.

Program Services Data



Center Contacts

Campbell County

Elk Valley
6693 Highway 297
Pioneer, TN 37847
(423) 784-2193

Valley View
1189 Old Middlesboro Highway
LaFollette, TN 37766
(423) 562-7090

West LaFollette
210 W. Beech Street
LaFollette, TN 37766
(423) 562-7335

Scott County

Burchfield
1108 West 3rd Avenue
Oneida, TN 37841
(423) 569-5022

Fairview
8706 Baker Highway
Huntsville, TN 37756
(423) 663-9301

Huntsville
3225 Baker Highway
Huntsville, TN 37756
(423) 663-4668

Robbins
359 School House Road
Robbins, TN 37852
(423) 627-4647

Winfield
23374 Scott Highway
Winfield, TN 37892
(423) 569-2147

Claiborne County

Child Development Center
775 Blue Top Road
New Tazewell, TN 37825
(423) 626-2517 OR (423) 626-6423

Clairfield
6366 Highway 90
Clairfield, TN 37715
(423) 784-7700

Ellen Myers
190 Nettleton Road
Harrogate, TN 37752
(423) 869-4513

Powell Valley
245 Powell Valley School Lane
Speedwell, TN 37870
(423) 869-0222

SMMS
450 Brown Street
Tazewell, TN 37879
(423) 626-1622

Springdale
1917 Highway 25E South
Tazewell, TN 37879
(423) 626-5152

TNT
497 Davis Drive
New Tazewell, TN 37825
(423) 626-5708

Hancock County

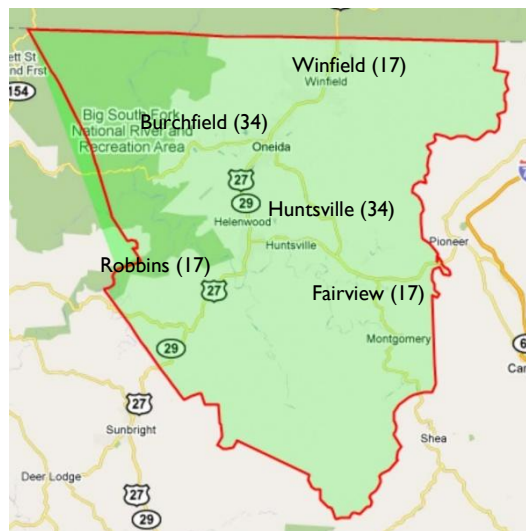
Kyles Ford
RR 1
Kyles Ford, TN 37765
(423) 733-1500

Service Area and Enrollment

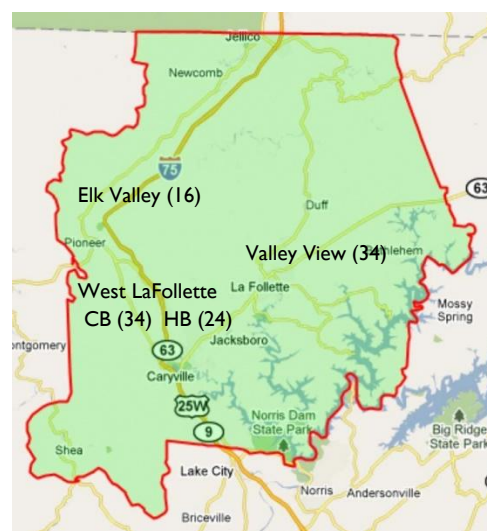
Funded Enrollment = 511



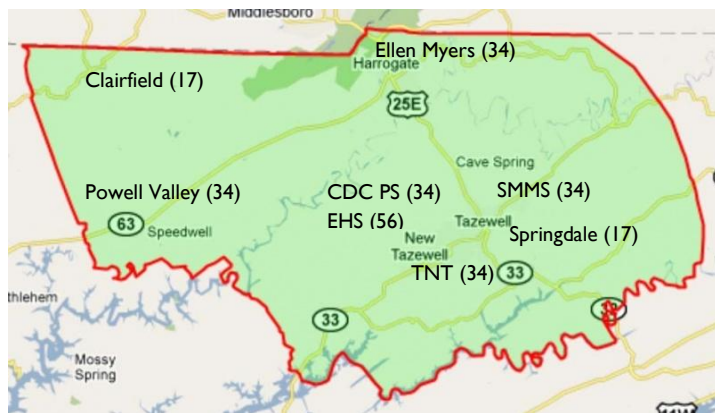
Scott County
Funded Enrollment - 119



Campbell County
Funded Enrollment - 108



Claiborne County
Funded Enrollment - 204 HS & 56 EHS

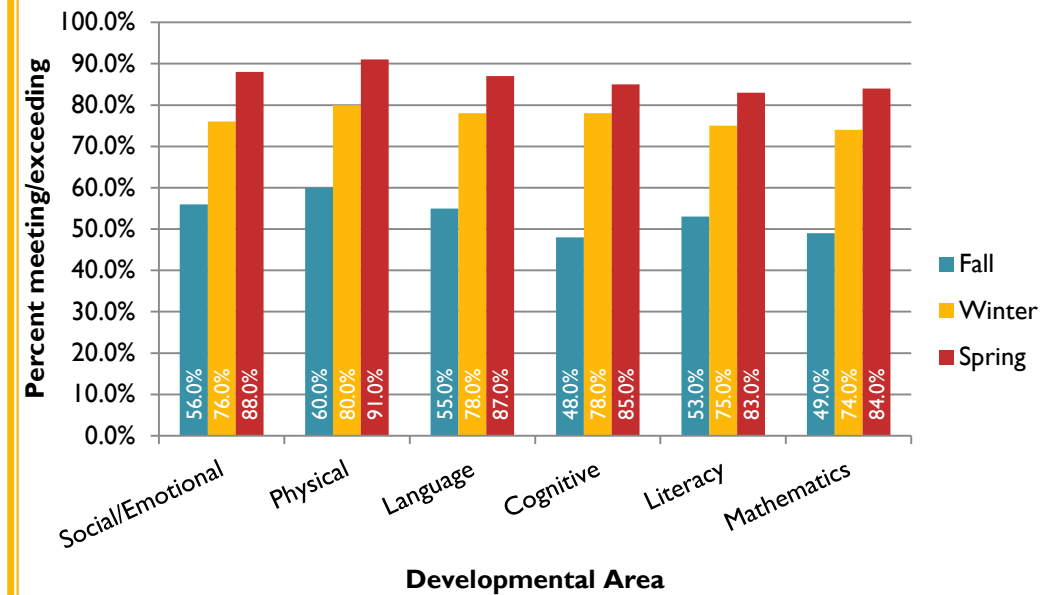


Hancock County
Funded Enrollment - 24



School Readiness

2017-2018 Educational Outcomes



Teachers assess child progress using Teaching Strategies Gold, which is paired with the Creative Curriculum, the Program's premier evidence-based curriculum. Classrooms are monitored multiple times each year to ensure the provision of quality services. Proudly, all centers hold the highest quality rating at 3-stars; and, the CDC location, which serves both Head Start and Early Head Start families, is NAEYC accredited.

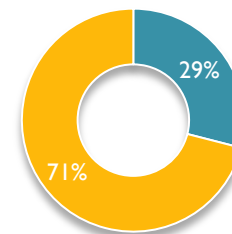
School Readiness goals align with the Head Start Early Learning Outcomes

Framework and Tennessee Early Learning Developmental Standards. These guidelines ensure that all areas of development are included and reflected in daily lesson planning.

Teacher Educational Attainment

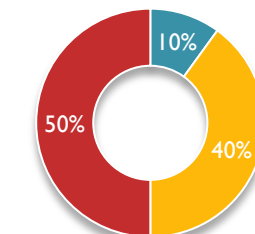
HS Teachers

BA or higher AA



EHS Teachers

BA or higher CDA HS Diploma



*Those with HS Diploma were enrolled in a CDA program



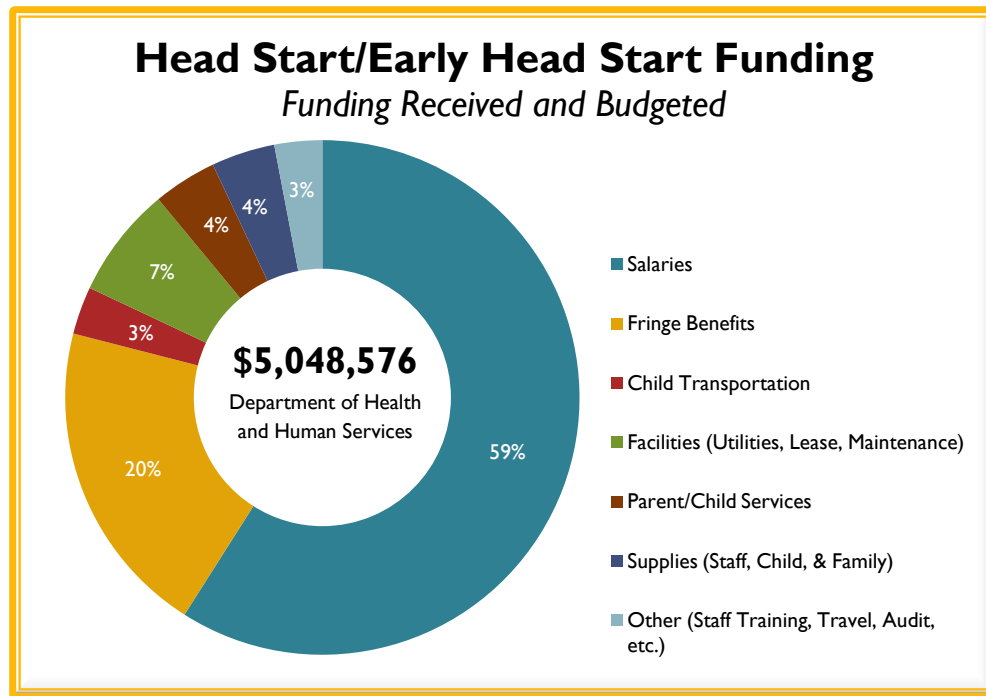
As a Head Start teacher for the past six years at CPEC, I have always wanted children to grow, learn, and be ready for Kindergarten with the confidence and knowledge to soar successfully. To help them, I decided, in July 2017, to return to school to get a Bachelor's degree. While working and going to classes, I have faced some life-threatening health problems and my two sons were deployed to dangerous parts of the world. However, I am proud to say, thanks to support from the Central Office and families I serve, I will be graduating in February 2019 with a 3.9 GPA and better prepared to help children reach their fullest potential. ~ Cheryl Wells, Preschool Teacher, TNT Center

51% of the 108 Head Start staff are current or former HS/EHS parents

41% of the 32 Early Head Start staff are current or former HS/EHS parents

Accountability and Review

The Agency consistently receives fully compliant reports from auditors for sound accounting practices and internal controls. The Agency was given a “no findings” report for the most recent annual audit conducted in July 2018.



In February 2018, the Office of Head Start conducted a Focus Area Two Monitoring Review of both the Head Start and Early Head Start Programs. The Federal review team congratulated the staff, parents, and Board members on the Agency’s practices, procedures, and successes and issued a final report with “no findings”. The program is entering the 4th year of the new “Five Year Grant” cycle.



Family Engagement

A total of 856 individuals supported the Program through 14,783 volunteer hours. A total of 251 fathers participated in fatherhood/male role model activities during the program year. Typical parent engagement activities include monthly parent meetings that provide parent education opportunities guided by the *Active Parenting First Five Years*® curriculum and include community speakers; specific training on mental health, adult education, and domestic violence; weekly socialization sessions for Home-based families; semi-annual parent breakfast; Kindergarten transition activities; car seat safety checks; “Spotlight the Child” events; “Make and Take” days; annual Fatherhood essay contest; and of course, many opportunities to volunteer in the classroom.

The Head Start Parent, Family, and Community Engagement Framework guides staff to work closely with families to establish goals that will enhance family well-being, parent-child relationships, families as lifelong learners, family engagement in transitions, family connections to peers and community, and families as advocates and leaders – all in an effort to promote children’s school readiness.

“Volunteering is one of my favorite things to do at school. It helps me understand children better and even my own son. Clinch-Powell Head Start is a wonderful opportunity for every child.” ~ Brittany Miller, Parent, Winfield Center

“Each week, our Home Visitor provides us with information and activities to better my son’s growth and development...My husband and I are so pleased with the progress we have seen thus far in our son.” ~ Kristen Gray, EHS Parent

Community Assessment

A Community Assessment is conducted every 5 years, with annual updates, for the purpose of ensuring the Program is providing services to best meet the needs of the community. The most recent update in June 2018 revealed the following information in support of the Agency’s continued services within the communities served.

Service area = 1,669 square miles

- Composite population = 100,347
- 97% average Caucasian population

Average poverty rate for children <5 = 40%

- Average percent of households in poverty = 19.5%
- Average median household income = \$31,481
- Average per capita income = \$19,131
- Average annual income (individual) for Fair Market Rent of two-bedroom apartment = \$24,320

Average unemployment rate = 4.58%

- Average of people with no high school diploma = 23.8%
- Average of people with only a high school diploma = 42.33%

Obesity rate for children age 2 - 4 from low income families = 14.4% - 15.3%

- Average children under age 18 who reside in a food insecure area = 27.43%
- Average households receiving SNAP with income below poverty = 62.8%
- Average students participating in Free/Reduced Lunch Program = 72.2%
- Average <6 receiving WIC = 60%

Average number live births = 271

- Average teen pregnancy rate = 16.0
- Average teen birth rate = 13.0
- Average without adequate prenatal care = 44.5%
- Average infant mortality rate = 4.43
- Average neonatal death rate = 2.43
- Average children born with neonatal abstinence rate = 64.4

Substantiated child abuse/neglect case rate = 7.25

